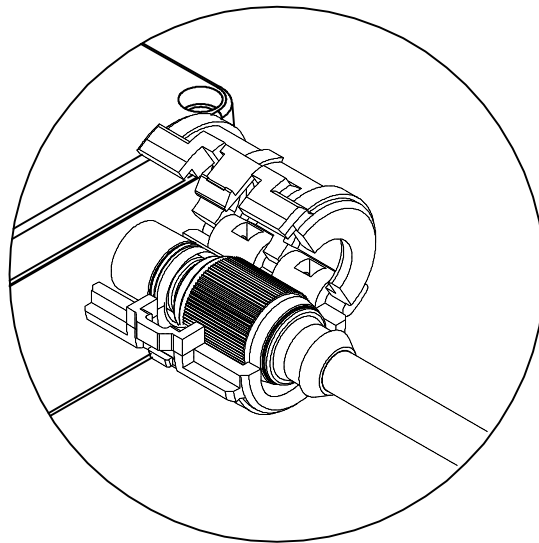


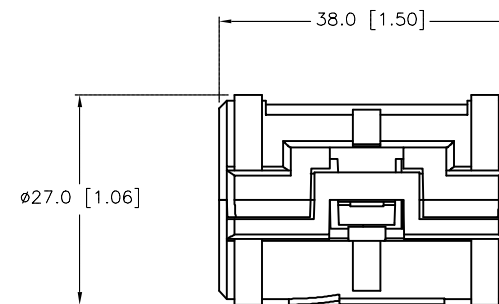
SPECIFICATIONS

HOUSING MATERIAL/COLOR

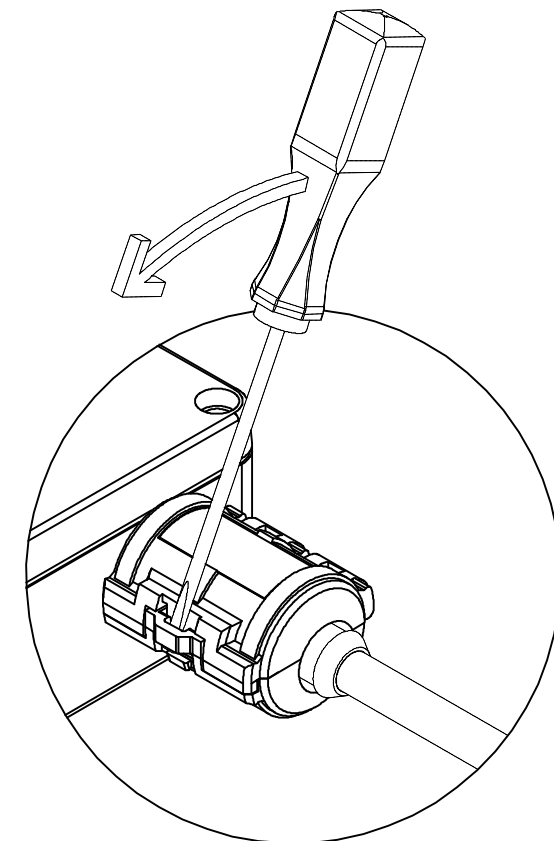
NYLON 66/BLACK



TO INSTALL LOCKOUT DEVICE, PLACE AROUND CORDSET END AND CLOSE UNTIL CONNECTOR SNAPS CLOSED. REFERENCE DIAGRAM OF CONNECTOR.



LOCKOUT DEVICE FITS STRAIGHT TURCK EUROFAST CONNECTORS. (RSG, RSGV, RKG, RKGV)



TO REMOVE LOCKOUT DEVICE, INSERT SMALL SCREWDRIVER INTO LOCKING GROOVE AS SHOWN IN PICTURE. ROTATE SCREWDRIVER IN DIRECTION SHOWN UNTIL LOCKING DEVICE RELEASES.

SOURCE DRAWING - FOR REFERENCE ONLY

RELATED DOCUMENTS 1. 2. 3. 4.	3RD ANGLE PROJECTION 	THIS DRAWING IS CONFIDENTIAL AND THE PROPERTY OF TURCK INC. USE OF THIS DOCUMENT WITHOUT WRITTEN PERMISSION IS PROHIBITED.		3000 CAMPUS DRIVE MINNEAPOLIS, MN 55441 1-800-544-7769 (763) 553-7300 (763) 553-0708 fax turck.com	
		TURCK INC <i>High Technology Sensors and Automation Controls</i>		DESCRIPTION LOCK EURO-G	
		DRFT RDS APVD SWC	DATE 12/16/03 SCALE 1=1.0		
		UNIT OF MEASUREMENT MILLIMETERS		IDENTIFICATION NO. A9104	REV B
MATERIAL	ALL DIMENSIONS DISPLAYED ON THIS DRAWING ARE FOR REFERENCE ONLY CONTACT TURCK FOR MORE INFORMATION	DO NOT SCALE THIS DRAWING		FILE: A9104	SHEET 1 OF 1
FINISH					

B	UPDATE DESCRIPTION	RDS	02/27/15	49160
REV	DESCRIPTION	BY	DATE	ECO NO.